

TEAM LETTER

By the time you read this I wonder how advanced your Christmas preparations will be: Christmas cards stamped and ready to post? Presents all wrapped and under the bed in the spare room? Christmas pudding stirred? (Or do you cheat and buy it from Tesco?) And what are you expecting for yourself? Another scarf from Auntie Maud which you will never wear, and the usual gift tokens from Uncle Albert?

All this has to be done of course, and I don't suppose these processes are very different in any of our families. But I touch a milestone in my preparations this year, in that it is my twentieth in these villages, which brings me up short a measure, for milestones do put a marker down, not just in the number of years passed, but in where they've gone and what have we done with them. In particular, in preparing for Christmas over that time, am I, or the people I serve, any different (other than getting older!) year upon year?

At Christmas we celebrate the coming into the world of the baby Jesus at Bethlehem, a story familiar enough to most of us, although at the time the event passed almost unnoticed – apart from presumably the innkeeper, and some shepherds who came off the hills into town, tipped off by some angels. If you think about it, his arrival was scarcely exclusive, in the primitive conditions out the back of an inn, but everybody was far too preoccupied and busy with other things to notice. Curiously, this has always been the pattern of Jesus' presence in the world, unobtrusive, and often we don't notice him and we pass him by. But the reason why we still remember the story and celebrate it, is because over 2000 years there have been some who **have** noticed, and have been changed by the experience and have passed the story on.

Just for reassurance, Jesus always meets us where we are, with our agendas, our priorities, doubts and fears. But when he does meet us, he always changes us. May you, this Christmas, meet with Jesus and in that meeting be changed, and blessed.

With my love in Christ.

Nicolas

Your Church in December and January

‘O come, o come Emmanuel!

Name and Date	Time and Service	Sidesmen	Readers & Readings	Prayers	Flowers	Cleaners
5 December Advent 2	6pm Evensong	David Mary	John – Isaiah 11:1-10 Mary – Matthew 3:1-12	Chris	No flowers	
12 December Advent 3	11am Village Communion	Amanda Lesley	Lesley – Isaiah 35:1-10 Caroline – Matthew 11:2-11	Amanda	No flowers	Lesley & Amanda
19 December Advent 4	4pm Carol Service	As many as possible	tba	ME	Everyone	
24 December Christmas Eve	4pm Crib Service	As many as possible	tba	tba		Bill & Ann
24 December Christmas Eve	11.30pm Midnight Mass	As many as possible	Isaiah 9: 2-10 Luke 2:1-14	tba		
25 December Christmas Day	9.30am Family Service + HC	As many as possible	Luke 2: 8-20	ME		
2011 HAPPY NEW YEAR!						
2 January Epiphany	6pm Evensong	Chris David	David – tba John - tba	Chris	Betty	Chris & Trish
9 January Baptism of Christ	11am Village Communion	Vikki Amanda	Joanna – tba Eileen – tba	Vikki	Caroline	
16 January Epiphany 2	11am Morning Worship	Lesley Marilyn	Marilyn – John 1:29-42	Lesley	Carolyn	John & Janet

23 January Epiphany 3	9.30am Holy Communion	Amanda Chris	Mary-Vere – tba Chris – tba	ME	Isobel	
30 January Epiphany 4	11am 5 th Sunday in C. Kingston	n/a	n/a	n/a	n/a	Lesley & Amanda
6 February Candlemas	4pm Christingle (APCM after)	Amanda Lesley	tba	tba	Dorothy	

PLEASE NOTE THAT OUR CHRISTMAS DAY SERVICE IS AT 9.30am. It will be a Family Service followed by a shortened version of Holy Communion for those who wish to stay on.

Please also note the time of the Carol Service this year – 4pm

The crib figures of Mary and Joseph will make their way round homes with young children on their way to the church for the Crib Service on Christmas Eve. Please ring 730233 if you do not wish them to spend a night with your family and please also ring if you were not visited last year but would like to be included in their itinerary.

Monthly Munch will be on Wednesday 1st December 1pm in the Village Hall

Sunday Club will be on Sunday 5th December 10-11.30 in the Village Hall to practise handbells for the Crib Service.

Bible Supper social – 7.30pm on December (date and venue to be decided, ask Vikki).

Pram Christmas Gathering will be on Friday 17th December 3.30pm in the church.

Decorating the Church – Donations of holly, greenery and berries would be much appreciated, left in the porch, ready for decorating on Saturday 18th December.

Refreshments! The PCC hopes you will enjoy a little tea with us after the Crib Service, and mulled wine and mince pies after the Carol Service.

The leaf sweep was completed in just under an hour! Very many thanks to the tremendous team of eleven, who made it seem easy, and for the use of the trailer.

The collection on Remembrance Sunday came to £484.20 and has been sent to Combat Stress.

The 'Open Morning' in the church on 21 November produced some lively and interesting suggestions for the future. You will find them on the notice board and, if you have further thoughts, please add them. Many thanks to those who came, and for their contributions.

JANUARY 2011 All good wishes for a VERY HAPPY NEW YEAR!

The church in Chute is supported by so many kind volunteers, and we couldn't manage without you! We do realise how lucky we are, and we really appreciate your time and skills. Whether your contribution keeps the church going financially, musically, arranging flowers, polishing brass, cleaning, reading, ringing bells, keeping up the churchyard and/or leaf sweeping, we are very grateful. Thank you!

Christingle Service – 4pm on Sunday 6th February

Christingle is often moved into the Christmas celebrations but does not need to be. For a change, we are celebrating Christingle on the day we celebrate Candlemas, and we hope the children and families (and everyone else!) will come and enjoy some cheer on a dark February evening.

The Annual Parochial Church Council meeting (ie. The PCC AGM) will be held after the Christingle Service on Sunday 6th February in Quince Cottage. Any parishioner who wishes to attend will be most welcome.

No Sunday Club in January, but we will resume on Sunday 6th February and make the Christingles.

Monthly Munch will be at the Village Hall on Wednesday 5th January, at 1pm.

Pram Gathering on Friday 28th January, 3.30pm in the church.

CHUTE PARISH COUNCIL

Would you like to be Clerk to the Parish Council?

Due to the resignation of the current Clerk the Council is urgently seeking to recruit a replacement. If you are interested in taking on this rewarding job please contact the Chairman, Cllr Eddie Quirk, on 730347.

Would you like to volunteer to be the Council's local auditor?

Since our previous appointee, Barry Caddick, is now a Councillor he can no longer carry out these duties and a replacement is needed as soon as possible. If you are interested in taking on this voluntary role please contact Cllr Barry Caddick (Responsible Financial Officer) on 730730.

Planning Applications

E/10/1380/TCA Chute Manor. Work to 4 Lime trees at rear. No objection by PC.

Planning Application Outcomes

E/10/1178/S73 Yew Tree Cottage, Forest Lane. Change roof from slate to lead. No PC objection. Approved by WC.

E/10/1181/FUL Barn adj to Fox Cottage. Replace barn with dwelling . No PC objection. Approved by WC.

E/10/1201/S73 Cart-house, New Bldgs. 2 roof lights front, new door etc. No PC objection Approved by WC.

E/10/1207/FUL Longview, Upper Chute Demolish various & erect stable block. No PC objection. Approved by WC.

E/10/1249/FUL 19 Tibbs Meadow. Amendment to 58894/K to allow chimney. No objection by PC. Approved by WC.

Clearing snow and ice yourself - new guidance published

Last winter many people helped keep pavements and public spaces around their homes clear of snow. However, many people were put off doing so because of fears of being sued. Wiltshire Council advise that there is no law stopping you from clearing snow and ice on the pavement outside your

property, pathways to your property or public spaces and if an accident did happen, it's highly unlikely that you would be sued as long as you are careful and use common sense to make sure that you don't make the pavement or pathway clearly more dangerous than before. Full detail with tips and advice on the subject can be found via the 'Directgov ' or HSE websites.

Availability of Grit Bins

The number of additional bins being made available across the county has been severely restricted but, after some sterling work by your Council you will be pleased to hear that we have won the case for provision and upkeep of an extra one at the entrance to Tibbs Meadow.

Amenity Skip for Upper Chute

I have arranged a subsidised amenity skip for the weekend beginning **Friday 21st January** to be sited as usual on the Village Green at Upper Chute. Remember that it will be a general purpose skip – the content goes to landfill – so is not intended for recycling materials.

The next meeting of the Parish Council will take place on Thursday 2nd December 2010 at 7.30pm in the Village Hall. As always, you will be welcome to attend. The agenda will be displayed around the Parish and the previous minutes will be displayed on the official Council notice board at the Village Hall.

David Clark (Chute Parish Clerk : Tel 730782)

TRO INQUIRY – Chantry Lane

As we go to print, the Traffic Regulation Order inquiry relating to Chantry Lane is underway. As soon as we know the result, we will publish it on the village web site – www.thechutes.org.uk.

Editors

CHUTE FOREST PARISH COUNCIL

Planning

E/10/1283/FUL Planning Application Red House Farm House Clanville ~ Open Air domestic swimming pool ~ Charles Alexander

E/10/1283/FUL Amendment to the above

Members were unable to come to a decisive opinion as to either support or object to the application as now submitted

E/10 1398/TCA Work on Trees in a Conservation area ~ Meadow View Chute Cadley ~ Mr P Foxen

Members RESOLVED to make no comment

E/10/1403/TCA Work on trees in Conservation area ~ Woodruff Chute Cadley ~ Mr Pickles

Members RESOLVED to make no comment

E/10/1499/FUL Planning Application Red House Farm Clanville ~ New dwelling with an equestrian tie (re submission of E/09/1501/FUL)

Members RESOLVED to make no objection, but did have concerns which would be submitted to the planning authority

Finance

The Precept FY11/12 is set at £2600

Tidworth Area Board

Fire and Rescue service advised there was free fire safety advice for the elderly. Other advice given was that everyone should check their smoke alarms, fit new batteries and check each alarm is working efficiently

Date of next meeting: was confirmed as Thursday 20th January 2011

Margaret Winterbourne, Chute Forest Parish Clerk.

☎ 01264 790179

✉ chuteforestpc@rocketmail.com

THE CHUTE WEDNESDAY CLUB

Our final trip for 2010 was to Bristol on Wednesday November 17th. This was a shopping trip and although the day was cold and wet we all enjoyed the many large shops there.

Our Christmas lunch for this year is at Wyke Down Country Pub on Wednesday December 1st this is booked 12noon for 12.30. The final number of bookings have been forwarded. We will have a raffle as usual so please try to bring along a raffle prize. Last year we had 45 prizes which meant there was a prize for each member present, it would be nice if we could manage this again.

Following the Christmas lunch our next get together will be Wednesday March 16th 2011 (this seems a long time off at the moment but "time flies") This date will be for the AGM details to follow.

Eileen Soper 730698

CAROL SINGING on Thursday 23rd December in Chute Cadley and Lower Chute

Please join us at Providence Cottage (walk in through the garage) from 6pm for mulled wine and mince pies before we move off at 6.30 if you would like to sing carols round Chute Cadley and part of Lower Chute. Children are particularly welcome, but anyone may join in!! Please bring a torch (any questions ring 730233)

DOG WALKERS

When walking dogs down Dean Hill track, Upper Chute, please keep dogs on a lead until you get half way down the track; but at all times keep them under control. Just recently, chickens have been killed even though they were shut in their house and run, which was broken into and the chickens were left dead outside their run with bite marks.

Thank you

Wally and Barbara Long

LINE DANCING

Every Monday evening (except Bank Holidays)
in Chute Village Hall – 7.30pm for 1 to 1½ hours
£2 per person.

Our last one for this year is Monday 13th December which is party night. We are having an American Supper. Please bring a plate of food. We start again on Monday 10th January 2011 for Line Dancing - same venue as above.

Barbara Long
730655

BARN DANCING

Friday 10th December
Chute Village Hall
8pm to 10.30pm
£3 per person

We also have a raffle. This is party night. We are having an American Supper. Please bring a plate of food.

Dates for Barn Dancing 2011: Friday 14th January
 Friday 11th February
 Friday 11th March
 Friday 8th April

Barbara and Wally Long
730655

COLLINGBOURNES, CHUTE AND EVERLEIGH LINK GOOD NEIGHBOURS SCHEME

Basil Frost (01264-850593) Chairman writes;

Our Senior Co-ordinator, Dick Edwards, advised us that he will be stepping down from this position with our local LINK scheme next year (probably in March). It is important that this vital position is filled as soon as possible and we are sure that there is someone in the villages who would enjoy and welcome this job.

If you feel you would like to join the team please ring Richard Carter, our Volunteer Recruitment Officer on 01264-850260.

Dick Edwards tells us about the job:

As the CCE Coordinator I have a dedicated Link Scheme telephone, with its specific telephone number which is always printed in the village magazines. I also have a list of all the Link Volunteers and their contact details.

A person phones in asking for Link assistance or support (we call these people "Users" – not a very attractive title, but they use the scheme so it makes sense!). They specify the sort of help they want, which is usually transport to go to hospital, a surgery or perhaps shopping. The vast majority of these calls are logged on the answer machine. I do not sit by the phone waiting for calls to come in: there are too many other things to do to operate like that, and we do not get that many calls. However, the messages are checked fairly regularly and noted in the Co-ordinator's log sheet.

Each request is dealt with in order of urgency. I will sometimes need to ring the User to clarify details, and then I will phone Volunteers to see who can undertake the task. The key information that is needed from the users is their name, telephone number and address; where they want to go to, the date and the time they need to arrive at this destination (particularly appointment times, etc).

Occasionally I will need to have special details such as use of a wheelchair (this will affect the size of car used), or if a user needs to be accompanied by a friend or relative. All of this information is then passed on to the

Volunteer(s) who will carry out the task. At no time are the contact details of Volunteers given to the users.

Volunteers are not asked to report back on their journeys, but if they want to they can, particularly if this information will be useful for future tasks. At the moment there is a team of two part-time Co-ordinators who fill in when I am away.

The CCE Link Scheme Management Committee meets four times a year, and the Co-ordinator presents a short report to this Committee – numbers of journeys and tasks and destinations and any other information that the Committee needs.

A more proficient computer user than me would probably do all the necessary work on a PC or laptop. I use a pencil and paper and that seems to work perfectly well. There is no requirement to be a computer expert to do this job !

I am often asked how many Link tasks I have to deal with. I would say that there are between 4 and 10 requests tasks per week (and 8 to 10 would be deemed very busy for the CCE scheme).

NEIGHBOURHOOD WATCH

- 1 I wish to announce that Pam Withall has agreed to take over as the new 'Area Coordinator' of Chute NHW. Her Deputy will be Virginia Chambers.
- 2 Scheme Coordinators will continue as shown on the back page of the Chronicle except for the following:-
 - Barry Caddick will take over from Pam Withall in Upper Chute.
 - Carolyn Wall will share part of Lower Chute with John Burden.
- 3 We are still looking for 2/3 more volunteers to join NHW. Anyone interested in joining this very worthwhile activity should contact the Area Coordinator (730277) Deputy Coordinator (730227) or any of the scheme coordinators shown in the Chronicle.

Pam Withall (01264) 730277

THE CHURCHYARD PUMP

You may be aware that before 1949, there was no piped water in Chute. There was a public well in Upper Chute, and another in Chute Cadley. All water was either drawn by bucket and rope from one of the several wells in Chute, or collected from rainwater, or from deliveries by the council water cart.



In times of drought – for example like the summer just passed – the underground water table would fall and wells in Upper Chute might dry up. In recognition of this, Chute Church provided a huge rainwater reservoir and hand pump.

Just inside the church door is a brass plaque:

“This pump with the tank annexed, have been given for the exclusive benefit of the poor cottagers of Chute, and more especially during the months of a very dry summer, the key always to be kept at the vicarage.
November 25th 1868”

This pump ceased to work around forty years ago.

In recent years Jim Griffin, Cummins Builders, local farmers and others have carried out a great deal of work to bring the pump and reservoir back to full working order.

Feel free to use the pump – it is no longer locked up.

You will need a few minutes instruction or it will not deliver your water! Just call David or Amanda or Jim Griffin.

Carols at the Keys!



A Christmas community activity between the Cross Keys Inn, St Nicolas church, and the village as a whole.

Tuesday 21st December, from 7.30pm

Hopefully outdoors (weather permitting) but indoors if necessary

Come and sing your favourite Christmas Carols amongst friends and neighbours – no auditions required! All most welcome!

The Cross  Keys Inn
Upper Chute





CAPTION COMPETITION

A bottle of wine to the best caption for the attached - the Chronicle editors decision will be final! Entries to chutechronicle@yahoo.co.uk no later than 15th January. A few starters are "The teetotal vicar uncovered!" and "If the pub won't come to the church, then the church must come to the pub!"

FUN RUN - UPDATE

I would like to give a big thank you to everyone who sponsored me for the Marble Hill Fun Run in aid of Cancer Research in September last. I personally raised £300 that was a tremendous amount but best of all my daughter's event raised a total £15,500 and there is still money coming in! It was great fun and a very successful day as you can see from the photographs on my website www.egphotography.co.uk .

Esther

THE ROYAL BRITISH LEGION POPPY APPEAL 2010

The Chutes have raised £1457.53 for the 2010 Poppy Appeal. This includes collections in the Pubs and Club, house to house collections and the sale of wreaths for the Remembrance Day Service. Congratulations to everyone.

On behalf of the Royal British Legion, I would like to thank all the volunteer collectors for their hard work, also the people of the two parishes who gave so generously. The annual Poppy Appeal is the Legion's principal fund raising event and it is through your generosity that it can continue to provide support to ex-service men and women and their families.

Sue Stock



**CHUTE VILLAGE HALL
CHRISTMAS PARTY**

**Saturday December 11th 7.30pm
Complimentary Drink
4 Course Hot Supper
Quiz**

**Guest Appearance by the comedian
Kevin Tomlinson plus further
surprise entertainment**

**Licensed Bar
Tickets £12.50**

From

**Carolyn Wall 730758
Wally and Barbara Long 730655
Jan and Eddie Quirk 730347**

The Cross Keys Inn

Upper Chute

2 for 1 Menu

Every Thursday Evening

Choose two main meals from our selected menu and get the cheaper meal free.

Xmas Opening

	Lunch	Evening
Weds 22nd Dec	12:00 - 14:00	18:00 - 23:00
Thurs 23rd Dec	12:00 - 14:30	18:00 - 23:00
Xmas Eve	All Day	12:00 - 01:00
Xmas Day	12:00 - 14:00	Closed
Boxing Day	12:00 - 16:00	Closed
Mon 27th Dec	All Day	12:00 - 23:00
Tues 28th Dec	12:00 - 14: 30	18:00 - 23:00
Weds 29th Dec	12:00 - 14:30	18:00 - 23:00
Thurs 30th Dec	12:00 - 14:30	18:00 - 23:00
New Years Eve	12:00 - 14:30	18:00 - 01:00
New Years Day	12:00 - 16:00	Closed
Sun 2nd Jan	12:00 - 16:00	Closed
Monday 3rd Jan	Normal Winter Hours	

Below are some of the Ales which will be here over December and New Year

Winter Lightning (yes it's back!!!)
 Pickled Santa
 Danish Dynamite

Red Ember
 Barbary Castle
 Jack Frost

The Cross Keys Inn, Upper Chute, Andover, Hampshire, SP11 9ER 01264 730295
 crosskeysinn@upperchute.com

The Cross Keys Inn

Upper Chute

New Year's Eve

Punk



Party

From 7pm til late

Fancy Dress Prizes

Happy Hour 10pm - 11pm

Free Entry

The Cross Keys Inn, Upper Chute, Andover, Hampshire, SP11 9ER 01264 730295
crosskeysinn@upperchute.com

VILLAGE DIARY

Date	Time	Event	Venue
01 Dec	7:00	Wiltshire Council black bin collection	House kerbsides
01 Dec	19:30	Choir Practice	St Nicolas
01 Dec	13:00	Monthly Munch	Village Hall
01 Dec	10:30	Mothers & Toddlers	Village Hall
01 Dec	13:00	Wednesday Club Christmas lunch	Wyke Down Country Pub
02 Dec	18:00	Two for One night	Cross Keys Inn
02 Dec	20:00	Curry Night	Hatchet Inn
02 Dec	19:45	Bell Ringing	St Nicolas
02 Dec	19:30	Chute Parish Council	Village Hall
03 Dec	9:30	Yoga	Village Hall
05 Dec	18:00	Evensong	St Nicolas
05 Dec	10:00	Sunday Club	Village Hall
06 Dec	19:30	Line Dancing	Village Hall
07 Dec	20:00	Quiz Night	Hatchet Inn
08 Dec	9:45	Wilts County Council Mobile Library	C Forest (9.45), C Cadley (10.10), Upper C (10.45)
08 Dec	20:00	Investment Club	Cross Keys Inn
08 Dec	7:00	Wiltshire Council black box & green wheelie bin collection	House kerbsides
08 Dec	19:30	Choir Practice	St Nicolas
08 Dec	10:30	Mothers & Toddlers	Village Hall
09 Dec	18:00	Two for One night	Cross Keys Inn
09 Dec	20:00	Curry Night	Hatchet Inn
09 Dec	19:45	Bell Ringing	St Nicolas
10 Dec	9:30	Yoga	Village Hall
11 Dec	19:30	Village Hall Christmas Party	Village Hall
12 Dec	11:00	Village Communion	St Nicolas
13 Dec	19:30	Line Dancing	Village Hall
14 Dec	20:00	Quiz Night	Hatchet Inn

14 Dec	19:30	Gardening Club Christmas party	Village Hall
15 Dec	7:00	Wiltshire Council black bin collection	House kerbsides
15 Dec	19:30	Choir Practice	St Nicolas
15 Dec	10:30	Mothers & Toddlers	Village Hall
16 Dec	18:00	Two for One night	Cross Keys Inn
16 Dec	20:00	Curry Night	Hatchet Inn
16 Dec	19:45	Bell Ringing	St Nicolas
17 Dec	15:30	Pram Service	St Nicolas
17 Dec	9:30	Yoga	Village Hall
18 Dec		Church decorating	St Nicolas
19 Dec	16:00	Carol Service	St Nicolas
19 Dec	11:00	Morning Worship	St Nicolas
20 Dec	19:30	Line Dancing	Village Hall
21 Dec	19:30	Carols at the Keys	Cross Keys Inn
21 Dec	20:00	Quiz Night	Hatchet Inn
22 Dec	9:45	Wilts County Council Mobile Library	C Forest (9.45), C Cadley (10.10), Upper C (10.45)
22 Dec	7:00	Wiltshire Council black box & green wheelie bin collection	House kerbsides
22 Dec	19:30	Choir Practice	St Nicolas
22 Dec	10:30	Mothers & Toddlers	Village Hall
23 Dec	18:00	Two for One night	Cross Keys Inn
23 Dec	20:00	Curry Night	Hatchet Inn
23 Dec	19:45	Bell Ringing	St Nicolas
24 Dec	16:00	Crib Service	St Nicolas
24 Dec	23:30	Midnight Mass	St Nicolas
25 Dec		CHRISTMAS DAY	
25 Dec	9:30	Family Service & Holy Communion	St Nicolas
26 Dec		BOXING DAY	
27 Dec	19:30	Line Dancing	Village Hall
28 Dec	20:00	Quiz Night	Hatchet Inn

29 Dec	7:00	Wiltshire Council black bin collection	House kerbsides
30 Dec	18:00	Two for One night	Cross Keys Inn
30 Dec	20:00	Curry Night	Hatchet Inn
30 Dec	19:45	Bell Ringing	St Nicolas
31 Dec		NEW YEAR'S EVE	
JANUARY 2011			
01 Jan		NEW YEAR'S DAY	
02 Jan	18:00	Evensong	St Nicolas
03 Jan	19:30	Line Dancing	Village Hall
04 Jan	20:00	Quiz Night	Hatchet Inn
05 Jan	9:45	Wilts County Council Mobile Library	C Forest (9.45), C Cadley (10.10), Upper C (10.45)
05 Jan	7:00	Wiltshire Council black box & green wheelie bin collection	House kerbsides
05 Jan	13:00	Monthly Munch	Village Hall
05 Jan	10:30	Mothers & Toddlers	Village Hall
06 Jan	18:00	Two for One night	Cross Keys Inn
06 Jan	20:00	Curry Night	Hatchet Inn
06 Jan	19:45	Bell Ringing	St Nicolas
07 Jan	09:30	Yoga	Village Hall
09 Jan	11:00	Village Communion	St Nicolas
10 Jan	19:30	Line Dancing	Village Hall
11 Jan	20:00	Quiz Night	Hatchet Inn
12 Jan	20:00	Investment Club	Cross Keys Inn
12 Jan	7:00	Wiltshire Council black bin collection	House kerbsides
12 Jan	10:30	Mothers & Toddlers	Village Hall
13 Jan	18:00	Two for One night	Cross Keys Inn
13 Jan	20:00	Curry Night	Hatchet Inn
13 Jan	19:45	Bell Ringing	St Nicolas
14 Jan	9:30	Yoga	Village Hall
16 Jan	11:00	Morning Worship	St Nicolas
17 Jan	19:30	Line Dancing	Village Hall

18 Jan	20:00	Quiz Night	Hatchet Inn
19 Jan	9:45	Wilts County Council Mobile Library	C Forest (9.45), C Cadley (10.10), Upper C (10.45)
19 Jan	7:00	Wiltshire Council black box & green wheelie bin collection	House kerbsides
19 Jan	10:30	Mothers & Toddlers	Village Hall
20 Jan	18:00	Two for One night	Cross Keys Inn
20 Jan	20:00	Curry Night	Hatchet Inn
20 Jan	19:45	Bell Ringing	St Nicolas
20 Jan	19:30	Chute Forest Parish Council	Village Hall
21 Jan	9:30	Yoga	Village Hall
23 Jan	9:30	Holy Communion	St Nicolas
24 Jan	19:30	Line Dancing	Village Hall
25 Jan	20:00	Quiz Night	Hatchet Inn
26 Jan	7:00	Wiltshire Council black bin collection	House kerbsides
26 Jan	10:30	Mothers & Toddlers	Village Hall
27 Jan	18:00	Two for One night	Cross Keys Inn
27 Jan	20:00	Curry Night	Hatchet Inn
27 Jan	19:45	Bell Ringing	St Nicolas
28 Jan	15:30	Pram Service	St Nicolas
28 Jan	9:30	Yoga	Village Hall
31 Jan	19:30	Line Dancing	Village Hall

The Chronicle Editorial Team would like to thank all our readers, advertisers and sponsors for their support in 2010, and wish you all a very Merry Christmas and a Happy New Year.

THANKS FOR YOUR 'MO' SUPPORT

This Movember, the month formerly known as November, and as some will be aware, I donated my face to raising awareness about prostate cancer. My donation and commitment was the growth of a moustache for the entire month of Movember, which has generated conversation, controversy, laughter and even pity!

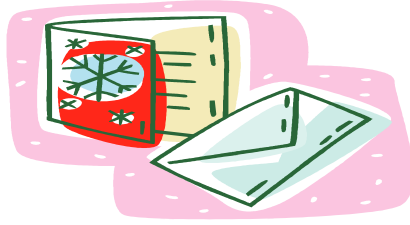
Prostate cancer is the most common cancer in men. One man dies every hour from the disease in the UK.

To those who have supported me, a big thank you – it looks as if will have raised over £500 which is excellent, and I'm most grateful to you. However if you haven't supported me, but would like to, then you can either:

- Use this link http://uk.movember.com/donate/your-details/member_id/838334/ and donate online using your credit card or PayPal account . Or,
- Send cheques and CAF vouchers (made payable to 'The Prostate Cancer Charity Re Movember') directly to The Prostate Cancer Charity – First Floor, Cambridge House, Cambridge Grove, London W6 0LE. Please be sure to include and number (838334) on the back of the cheque. Or,
- Let me have the cash or cheque (made payable to 'The Prostate Cancer Charity Re Movember') which I will dutifully pass on, in your name.

Thank you for helping me to support men's health.

Chris Stock



**CHUTE XMAS CARDS and CALENDARS
DEPICTING LOCAL CHUTE SCENES
NOW ON SALE**

**Pack of 5 Cards only £2.00
Slim Line Calendars only £5.00**

From

**Carolyn Wall 730758
Claire Warrender 730603
Marilyn Cripps 730422
Jan & Eddie Quirk 730347
The Longs 730655
Mary Brown 730236**

All Profits in Aid of Chute Village Hall

CHUTE GARDENING CLUB



Chute Gardening Club Christmas Party

Tuesday 14th December
7.30pm
Chute Village Hall

Wear Silver and Gold
A Quiz
A Raffle
A Table Decoration Competition

All for £7.50 a ticket

Christmas Party

To ensure that the evening goes well, please remember to bring your tickets with you, or pay on the door for pre-booked tickets.

Thank you to everyone who has agreed to cook a casserole or pudding. Please bring your dish along cooked and hot; the Gardening Club will reimburse your costs and even pay £5 in advance to help. If you would like to cook a dish contact Eileen Soper on 730698.

Seed Orders

Mr Fothergill's seed catalogues are now available; the club is entitled to a discount if we send an order before Christmas, please complete order form and hand to John Wood either before or at the Christmas Party.

AGM, Cheese and Wine

15th February 2011, 8.00pm in the Village Hall, **please note the change of date from the 18th January 2011.**

Cross Keys

The Committee would to say a big thank you to George, John, Dean and the staff at the Cross Keys for allowing us to meet there and for their hospitality throughout the year.

Merry Christmas and a Happy New Year from the Gardening Club Committee.

**Jan Quirk
Secretary Chute Gardening Club
730347**

Pony Manure

Due to the VAT increase (and the cost of my Dad`s Diesel!) as from 1st January 2011 I will be selling my Pony Manure in 25 kg sacks @ £3.00, still cheaper than Scats and the garden centres! Free delivery to all Chute residents and addresses, however a delivery charge will be made outside of Chute (I have to pay Dad for diesel)! No minimum order.

I would just like to wish all my customers a very Happy Christmas and New Year and thank you all for your business during 2010 and am sure your gardens will be the best ever in 2011.

Meghan Foxen 730367 or email your order to: foxymim@hotmail.co.uk

LOCAL POLICING

Christmas is a time for giving, but also for taking. Any burglar knows that items wrapped and left under a Christmas tree are brand new. I will always remember the family who returned from holiday on 24th December to find burglars had ransacked the gifts under the tree. My advice is not to put the presents out before Christmas Eve, especially if you are going on a pre-Yuletide holiday.

This month we say goodbye to Special Police Constable John Wilding, who is moving to the Hampshire Specials. We wish him well. If anyone feels able to take his place by joining the Special Constabulary and keeping the Queen's peace as a member of our team, we would love to hear from you.

As the price of metal goes back up to pre-recession levels, so there is a resurgence of rural metal thefts. Thieves have been known to undertake the dangerous practice of removing conducting copper, while it is still live in an electrical circuit!

Local crimes have included a burglary from a farm in Clanville.

Michael Bayliss
Police Constable 1250

Maria Downham
PCSO 6078

Philippa Royston
PCSO 6235

0845 408 7000 Extension 744 817
Ludgershall and Rural Neighbourhood Policing Team
ludgershallruralnpt@wiltshire.pnn.police.uk

Andover Choral Society's Christmas Concert

St. Mary's Parish Church, Andover
Saturday 11th December 2010
7:30 p.m.

Anton Sinfonia
conducted by
Peter Ford

Dyson - Three Songs of Praise
Finzi - In Terra Pax
Bach - Magnificat

Registered Charity
No:1104982

Enquiries 01264 354305

Tickets £10/ £8 concessions from Waterstone's Bookshop - 14 years and under free



Super Clean

Domestic & Commercial Cleaners

Established local independent cleaners
Reliable & trustworthy. References on request
All cleaning equipment & products supplied
Weekly, fortnightly or monthly. Totally flexible
Carpets & upholstery cleaning also
Oven cleaning
For a free quote contact Martin or Gill on

01264 839209 or 07708835356
email super.clean@btinternet.com



LOCAL FRESH CHRISTMAS TREES

***DIRECT FROM THE GROWER
COME AND VISIT
JANE AND TREVOR***

WILLIS FARM NR VERNHAM DEAN, SP11 0LL

ALSO AVAILABLE: METAL TREE STANDS – WREATHS (2 SIZES - ORDERS CAN BE TAKEN IN ADVANCE) – HOLLY - MISTLETOE – KINDLING WOOD

**OPEN DAILY FROM Wed 1st December to Wed 22nd December
10.00am – 4.00pm**

For more information please call 07759 583631 or 731202

Members of the British Christmas Tree Growers Association

FOR SALE

£3.00 per 25kg sack well rotted manure.

I can deliver free of charge in the Chutes (well my Dad can) No minimum order. Please call me to place your order: 730367

Meghan Foxen

LOGS FOR SALE

Full Load - £80

Half Load - £40

Phone Les Tobutt, 730310

SAWDUST

If you have a hamster, rabbit or similar and would like some wood chippings, please let me know and I'll happily let you have them.

Chris Stock, 730613

GRAVEL

Remodelling drive: consequently about 10 to 15 tonnes of 20mm gravel available shortly.

Expressions of interest - please ring:

David and Ursula Starkie on 730721

CARE ASSISTANT AVAILABLE

Need some extra help with the following duties:

- General Care/Nurse duties
- Housework
- Dog Walking
- Food Shopping
- Washing etc

Contact **Hannah** on 07720 328438 for more information on days and times available and the rates of pay.

Badge and CRB checked – proof available

REGISTERED NURSE AVAILABLE

- Available for any nursing duties in your own home
- Competitive rates of pay
- Palliative Care specialist

Contact **Angie** on 07908 779836 or 01264 391177 for more information on days and times available and the rates of pay.

Badge and CRB checked – proof available

CHUTE WEATHER DATA – OCTOBER 2010

Rainfall

Total	Days	Max 24hrs	No Sun	Full Sun
67ml [78]	10	30ml	5 days	6 days

32ml fell in the first three days of the month, the rest largely in the last few days.

Temperatures

Max Day	Min Day	Min Night	Avg day	Avg night	Nights 0c or below
21°C	5°C	-5°C	13.5°C	5.5°C	6

Many thanks to the Pike family for keeping the records while I was away. It is worth noting that Cadley Bottom is a frost pocket and may well have temperatures two degrees lower than Chute Cadley.

In cold weather it would be interesting to include both readings, and also one from Upper Chute if anyone has an outdoor sensor and would care to email or phone me.

Virginia Chambers. 730227

viriniachambers@btinternet.com

CHUTE CRICKET CLUB

At the recent dinner, the following awards were made:

Caps: In addition to Paul Burnell who qualified during the season, James Lloyd was given no. 24 (or would have been if his wife hadn't given birth earlier in the day) and Paddy Evans no. 25

Special: In view of her excellent scoring work, Susie Emery was presented with a cap and shirt

Bowler of the Year: Paul Struthers

Batsman of the Year: Charlie Gold who was also given a special award for his 100 not out

Captain's Cup: Chris Orange

Player of the Year: Charlie Gold

Congratulations to them all, and roll on 2011!

Chris Stock, 730613, chris.stock@thechutes.org.uk



Music with mummy

**Fun and educational music classes
for babies and children 0-3years.**

**We will wave and clap, sing and dance. Simple percussion becomes
a favourite, as will the teddies and the bubbles.**

**We have fantastic new schemes each half term for the older
children and introduce new musical concepts through our
especially composed songs.**

Come along and join in the FUN!

**St. Mary Bourne Monday, Whitchurch Tuesday
Monxton near Andover Wednesday and Thursday.**

£28 per 7 week course

We have just 10 places in each class so don't miss out..

Tel Nicky on 01264 720452

**Or email nicky@derrick3.fsnet.co.uk
to book your place.**

www.musicwithmummy.co.uk

Date	Burbage	Ham/ B'mere	Shalb'n/ Bagshot	Tidcombe	C' Ducis	C' Kingston	Grafton	Gt Bedwyn	Little Bedwyn	St Katharine's
1 Dec 10 (Wed)	8.00pm Mid-week	-	-	-	-	-	-	-	-	-
5 Dec 10 2nd Sunday of Advent	8am HC 11am All Age 4.30pm Christingl	11.00 am Combined Shalbourne & Ham Family Service		-	8am HC ME	9.30am Family Service ME	11am Patronal RH & + Stephen	11am Matins RG	9.30am Parish Communio n RH & + Stephen	6pm Evensong lay
8 Dec 10 (Wed)	9.30am MU HC 7.00pm Carols @ S'mr Ct	-	-	-	-	-	-	12 noon Communio n RH	-	-
12 Dec 10 3rd Sunday of Advent	8am HC 11am Somethin g Different	11am Matins ST	9.30am HC NLH	5.00pm Christingl e AD	9.30am Parish Com ME	8am HC ME	-	6.00pm Nine Lessons and Carols	8am HC RH	11am Matins LAY
19 Dec 10 4 in Advent	8.00am HC 11am Family 6.00pm Carols	3pm Carol Service AD	6.30pm Carols by Candleligh t ST	-	6.00pm Carol Service ME	09.30 HC ME	11am Carol Service RH	8.00am HC RH	-	6pm 9 Lessons & Carols RH
24 Dec 10 Christmas Eve (Fri)	5pm Crib Service 11.30pm Midnight Com	3pm Crib Service at <i>B'mere</i>	3.30pm Crib Service 11.30pm Midnight	-	3.00pm Come to Bethlehe m ME	11.30pm Midnight HC ME	-	4pm Crib & CribC'ting 11.30pm Midnight Mass	-	-
25 Dec 10	8am HC 11am	9.30a m	-	-	11am Service +	-	11am Christma	11am HC RH	8am HC RH	9.30am HC RH

Christmas Day	Family HC	Fam Com			HC		s HC	LD			
26 Dec 10 1st of Christmas	-	-	-	-	-	-	-	-	10.00am TEAM SAID HC RH	-	-
2 Jan 11 Second Sunday of Christmas	8.00am HC NLH 11am Family Service	9.30am HC NLH	11am Family Service NLH	-	8.00am HC ME	9.30am Family Service lay &/or ME	-	-		9.30am United Parish Communion RH	-
9 Jan 11 1st in Epiphany	8am HC 11am Family Com	11am Matins RG	9.30am HC NLH	-	9.30am Parish Com ME	8.00am HC ME	-	-	9.30am Family Service & Baptism	8.00am HC RH	11am Matins RH
16 Jan 11 2nd in Epiphany	8am HC 11am All Age Worship	11am Parish Com AD	9.30am HC LD	-	6.00pm Evensong ME	9.30am HC ME	11am Family Service & Baptism	8am HC RH 11am Family Service lay	6pm Evensong AD	9.30am Parish Communion RH	
23 Jan 11 3rd Sunday of Epiphany	8.00am HC RG 11am Family Service	-	11am joint Worship lay	-	11am Family Service ME	6pm Evensong ME	11am Family Service LD	9.30am Parish Communion RH/John Wraw	8am HC RH	11am Parish Communion RH/John Wraw	
30 Jan 11 4th Sun of Epiphany	8am HC LD 11am All Age Worship	-	9.30am Cluster at Bagshot HC LD	-	-	11am Cluster HC ME	-	-	-	-	09.30am United Parish Communion